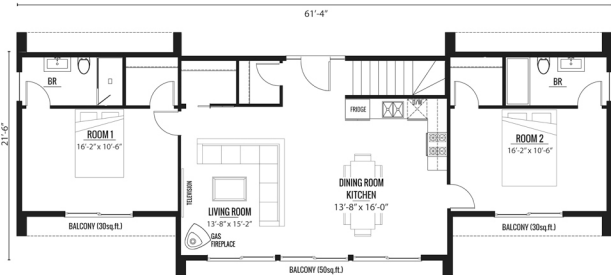
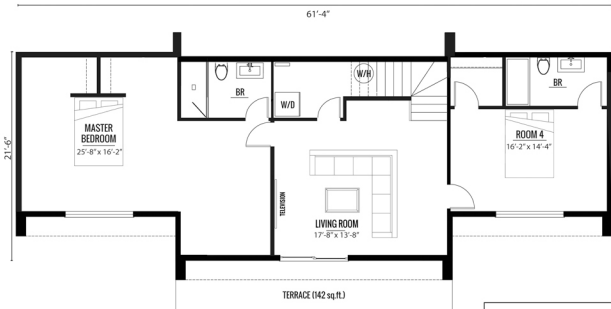


Rez-de-chaussée/Ground floor : 1160 sq.ft/pi<sup>2</sup>

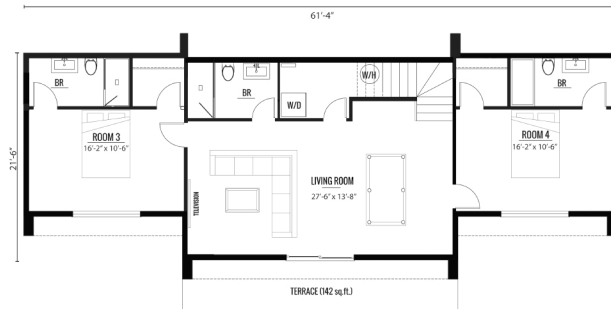


Sous-sol/Basement : 1160 sq.ft/pi<sup>2</sup>

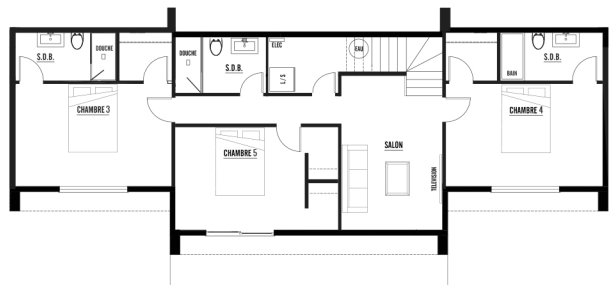


First Floor:	1160 sq.ft
Basement:	1160 sq.ft
<b>Total:</b>	<b>2320 sq.ft</b>

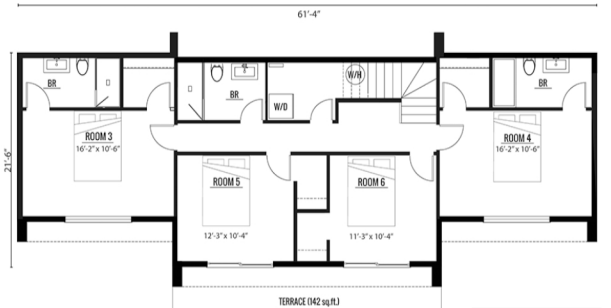
4 bed/5 bath 2,320 sf<sup>2</sup> total (sous-sol/basement)



5 bed/5 bath 2,320 sf<sup>2</sup> total (sous-sol/basement)



6 bed/5 bath 2,320 sf<sup>2</sup> total (sous-sol/basement)



First Floor:	1160 sq.ft
Basement:	1160 sq.ft
<b>Total:</b>	<b>2320 sq.ft</b>