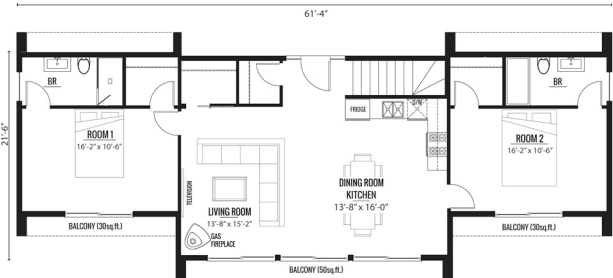
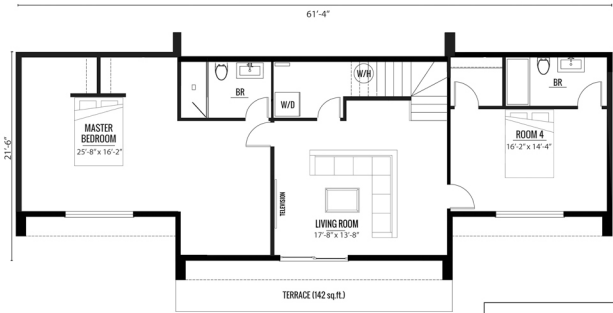


Rez-de-chaussée/Ground floor : 1160 sq.ft/pi²

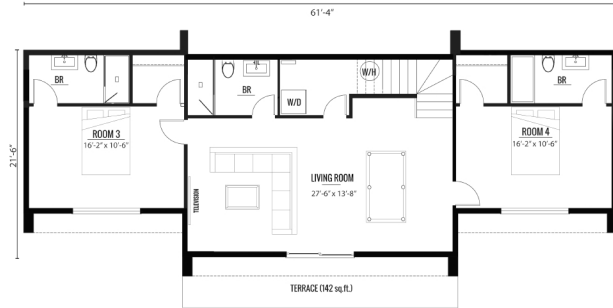


Sous-sol/Basement : 1160 sq.ft/pi²



First Floor:	1160 sq.ft
Basement:	1160 sq.ft
Total:	2320 sq.ft

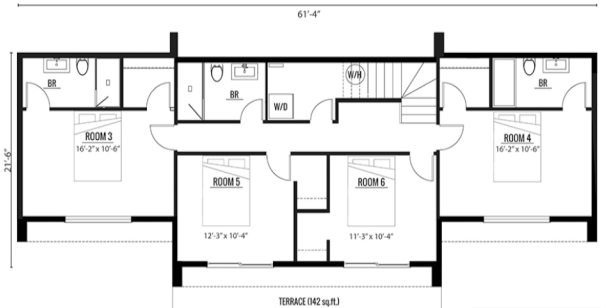
4 bed/5 bath 2,320 sf² total (sous-sol/basement)



5 bed/5 bath 2,320 sf² total (sous-sol/basement)



6 bed/5 bath 2,320 sf² total (sous-sol/basement)



First Floor:	1160 sq.ft
Basement:	1160 sq.ft
Total:	2320 sq.ft