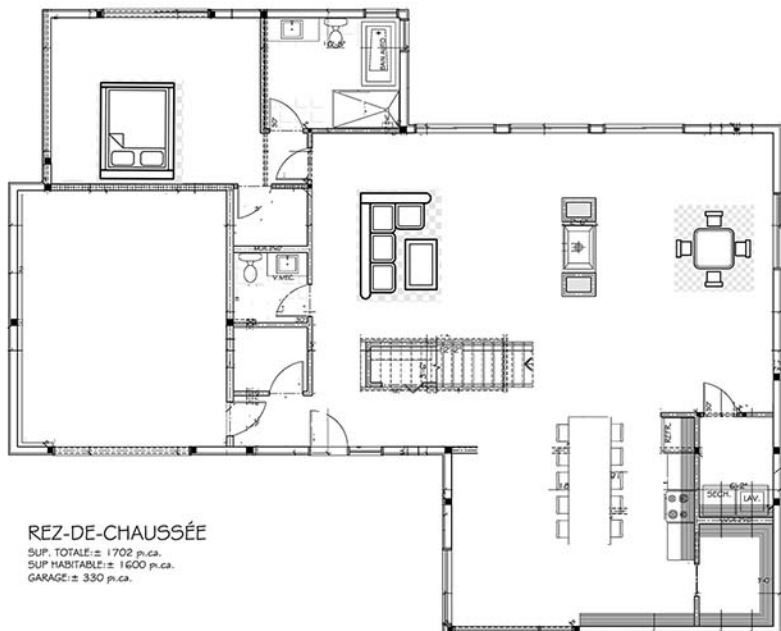


**ETAGE**

SUP. TOTALE: ± 1834 p.ca.  
SUP. HABITABLE: ± 1726 p.ca.



**REZ-DE-CHAUSSÉE**

SUP. TOTALE: ± 1702 p.ca.  
SUP. HABITABLE: ± 1600 p.ca.  
GARAGE: ± 330 p.ca.